

Lincolnshire Posy

Based on English folksongs gathered in Lincolnshire, England by Lucy E. Broadwood
and Percy Aldridge Grainger and set for Military Band (Wind Band)

No 1145

Bass Trombone

1. "Lisbon" (Sailor's Song)

Percy Aldridge Grainger
Edition Assembled by Frederick Fennell
Revised by R. Mark Rogers

SILENT

2. "Horkstow Grange" (The Miser and his Man: a local tragedy)

Slowly flowing; singingly ♩ = about 76
Baritone

The musical score for the Bass Trombone part of "Horkstow Grange" consists of several staves of music. The key signature is three flats (B-flat, E-flat, A-flat) and the time signature is 4/4. The score includes various dynamics such as *mf*, *f*, *mp*, *f*, *p*, *ff*, and *pp*. It also features performance instructions like "louden", "linger", "slow", "off", "Slightly slower", "slacken slightly", "slow off", and "long". Measure numbers 6, 10, 12, 14, 17, 19, 25, 27, 29, 33, and 34 are marked in boxes. The score includes rests for the instrument in measures 12-14, 17-19, and 25-27. A "Trumpet starred (solo)" part is indicated in measure 25. The piece concludes with a "long" note in measure 34.

3. "Rufford Park Poachers" (A) (Poaching Song)

Flowingly ♩(♩) = about 132

Version A

11 2 3 3 2

18 2

21 26

single
2nd Tpt.
muted

27 2

33 34

linger In time

39 40

single
2nd Tpt.
muted

slow off slightly

quicken slightly

46 In time

Bass Tromb.

to 51

mf louden lots fff

3. "Rufford Park Poachers" (B) (Poaching Song)

Flowingly ♩(♩) = about 132

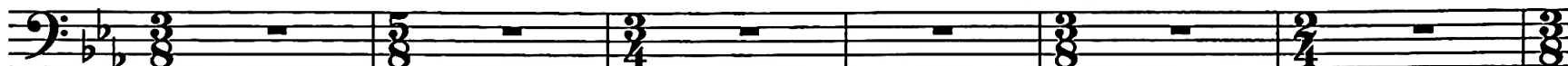
Version B

11 2 3 3 2

18 2 2

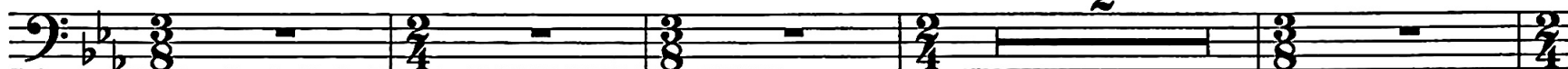
22

26



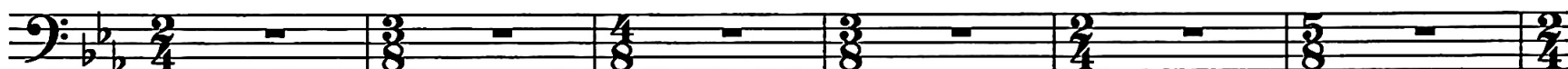
28

2



34

linger In time

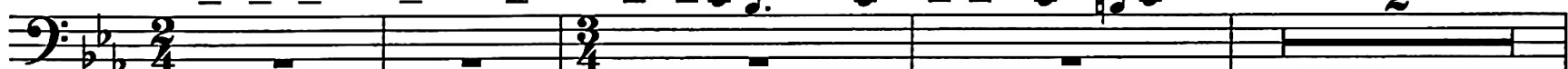


slow off slightly

Soprano Sax.

40

quicken slightly



46

In time

Bass Tromb.



mp mf

louden lots

fff

51

Version A and B

Somewhat faster ♩ = about 80



mf

ff

mf

57



ff

mp

f

mp

ff

62

63

slow off slightly?



p mp

f

mf

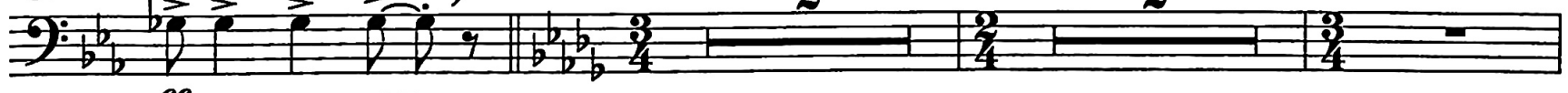
louden lots

68

slow off - - - - -

In time, 2nd speed, but waywardly ♩ = about 76

67



ff

73 76

p \curvearrowright *mf* \curvearrowleft *pp* *pp* \curvearrowright *f* \curvearrowleft *pp*

80 *slow off lots* ----- 83 **In time, 1st speed** ♩ = about 132

pp \curvearrowleft *f* \curvearrowright *pp*

89 3 95 2

97 *slow off* ----- 2 *long*

4. "The Brisk Young Sailor"
(who returned to wed his True Love)

Sprightly ♩ = about 92

9 8 17 8

25 8 34 2

pp \curvearrowright *mf*

37 *no slackening* 40

f \curvearrowright *ff* *sf* *sf* *sf* *sf* *ff*

41 *slow off* 43 **In time** 5

f *angrily*

5. "Lord Melbourne" (War Song)

N.B. Passages marked "Free time" are without regular beat-lengths. The conductor will beat for every note with an arrow above it. Regular beat-lengths are to be taken up in sections marked "Strict time."

Heavy, fierce ♩ = about 96-120

Free time

f fairly clingingly

Ⓐ

f fairly clingingly

2 Lively ♩ = about 100
Strict time

Ⓑ Free time

ff fairly clingingly

10 Strict time ♩ = about 100 *slow off* ----- 14 Lively, playful ♩ = about 92

f

16 Horns 1st Tromb. 19 Bass Tromb.

mf *p* *p*

22 24

mf *mp* *p*

28 *slow off* ---

mp *f* *mf* *f* *f*

34 ----- In time ♩ = about 92 39

fff

41 2 44 Lingeringly ♩ = about 69

2nd Trumpet (muted)

48 (C) Free time ♩ = about 96-120 Slightly faster slow off

ff *clingingly* *don't louden*

50 (50) Strict time ♩ = about 80 quicken ----- slow ----- off -----

fff *f* *very brassy*

55 (D) Free time ♩ = about 96-120 (56) Strict time ♩ = about 72 long long long

ff *fff*

6. "The Lost Lady Found" (Dance Song)

Fast, but sturdily ♩ = about 66

9 (10) 8 (18)

f

22 (26)

30 (34) Euphoniums

p

37 (Euphs.) (42)

louden

45 Bass Tromb. Euphs. 50 8

58 8 66 8 74 8 82

1st Tpts. *p* louden lots bit by bit

87 *mf* *ff* *f* very sharp

98 Tubas *mp*

103 (Tubas)

114 Bass Tromb. *mp* louden bit by bit

110 (Tubas) *louden*

117 *f* *ff*

122 8 130

132 *sf* *sf*

138

140 *hammeringly* *slow* ----- *off* ----- *ffff*