

"Premiere performance by the Clearwater Community Band, Clearwater, Florida. Jeffrey L. Traster, director"

Arr. By: Rob Romeyn
(ASCAP)

rall.

11 Spirited ♩ = 126

The musical score for the bass line of 'The Rose Tree' is written on a single staff in bass clef with a key signature of one flat (B-flat). The melody begins with a half note B-flat, followed by a quarter note G, and then a half note F. A slur covers the next four measures: a quarter note E, a quarter note D, a quarter note C, and a quarter note B. This is followed by a quarter rest. The next measure contains a half note B-flat. The following two measures are half notes A and G. The next two measures are half notes F and E. The melody then rises to a half note D, followed by a half note C. A bracket above the next two measures indicates a triplet of eighth notes: B, A, and G. This is followed by a half note F. The next two measures are half notes E and D. The final measure contains a half note C. The piece concludes with a double bar line. A dynamic marking of *f* (forte) is placed below the staff at the end of the piece.

[illegible]

21

28

[illegible]

2

f

mp

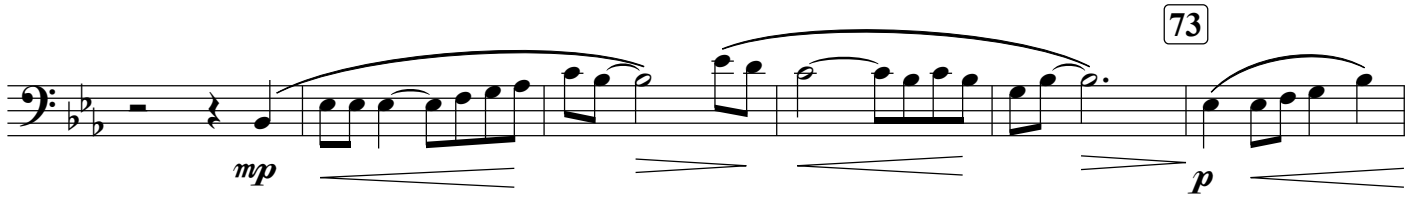
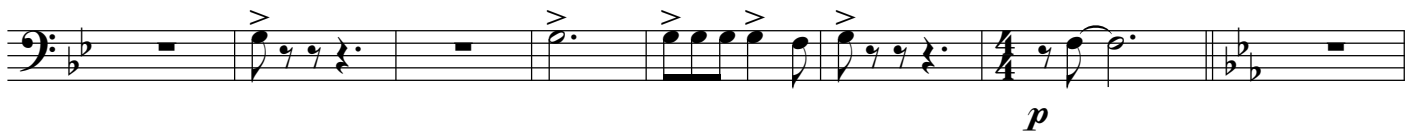
f

46 ♩ = 126

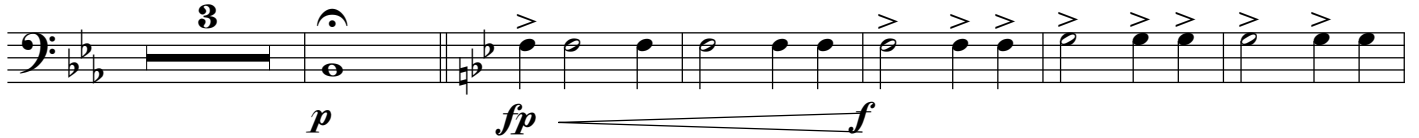
Musical notation for the bass line of 'The Rose Tree'. The notation is on a single staff with a bass clef and a key signature of one flat (B-flat). The tempo is marked 'Allegretto' and the time signature is 6/8. The piece is in common form, with a first ending marked 'ff' (fortissimo) and a second ending marked 'f' (forte). The notation includes various musical symbols such as notes, rests, and dynamic markings.

[illegible]

66 Expressive (♩ = 72)
rall. a tempo



84 Proudly ♩ = 116



93 Spirited ♩ = 126



103 Forcefully ♩ = 76

