

AMERICAN SPECTACULAR

"Premiere performance by the Clearwater Community Band, Clearwater,
Florida. Jeffrey L. Traster, director"

Arr. By: Rob Romeyn
(ASCAP)

E♭ Baritone Saxophone

Stately ♩ = 106



p

rall.

11

Spirited ♩ = 126



f



fp

21



fp

28



fp



4

46

♩ = 126



mp

f

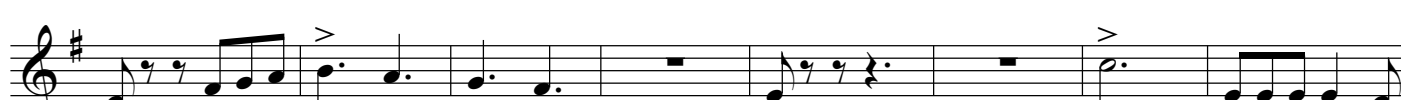
ff

f



mp

f



66 Expressive (♩ = 72)
rall. *a tempo*

73

84 Proudly ♩ = 116

Measures 66-84. Measure 66: Treble clef, key of D major (F#), 4/4 time. Notes: D4 (quarter), E4 (quarter), F#4 (quarter), G4 (quarter), A4 (quarter), B4 (quarter), C5 (quarter), D5 (half). Measure 67: Rest. Measure 68: Rest. Measure 69: Rest. Measure 70: Rest. Measure 71: Rest. Measure 72: Rest. Measure 73: Rest. Measure 74: Rest. Measure 75: Rest. Measure 76: Rest. Measure 77: Rest. Measure 78: Rest. Measure 79: Rest. Measure 80: Rest. Measure 81: Rest. Measure 82: Rest. Measure 83: Rest. Measure 84: Treble clef, key of D major (F#), 4/4 time. Notes: D4 (quarter), E4 (quarter), F#4 (quarter), G4 (quarter), A4 (quarter), B4 (quarter), C5 (quarter), D5 (half). Dynamics: *fp* at measure 84, *f* at measure 85. Performance markings: *rall.* at measure 66, *a tempo* at measure 73, *f* at measure 84, *rall.* at measure 85. Rehearsal marks 6, 11, and 16 are present.

93 Spirited ♩ = 126

Measures 93-102. Measure 93: Treble clef, key of D major (F#), 4/4 time. Notes: D4 (quarter), E4 (quarter), F#4 (quarter), G4 (quarter), A4 (quarter), B4 (quarter), C5 (quarter), D5 (half). Measure 94: Rest. Measure 95: Rest. Measure 96: Rest. Measure 97: Rest. Measure 98: Rest. Measure 99: Rest. Measure 100: Rest. Measure 101: Rest. Measure 102: Treble clef, key of D major (F#), 4/4 time. Notes: D4 (quarter), E4 (quarter), F#4 (quarter), G4 (quarter), A4 (quarter), B4 (quarter), C5 (quarter), D5 (half). Dynamics: *f* at measure 93, *fp* at measure 102, *f* at measure 103. Performance markings: *f* at measure 93, *fp* at measure 102, *f* at measure 103.

103 Forcefully ♩ = 76

Measures 103-112. Measure 103: Treble clef, key of D major (F#), 4/4 time. Notes: D4 (quarter), E4 (quarter), F#4 (quarter), G4 (quarter), A4 (quarter), B4 (quarter), C5 (quarter), D5 (half). Measure 104: Rest. Measure 105: Rest. Measure 106: Rest. Measure 107: Rest. Measure 108: Rest. Measure 109: Rest. Measure 110: Rest. Measure 111: Rest. Measure 112: Treble clef, key of D major (F#), 4/4 time. Notes: D4 (quarter), E4 (quarter), F#4 (quarter), G4 (quarter), A4 (quarter), B4 (quarter), C5 (quarter), D5 (half). Dynamics: *ff* at measure 103, *mf* at measure 104, *cresc.* at measure 105, *rall.* at measure 106. Performance markings: *ff* at measure 103, *mf* at measure 104, *cresc.* at measure 105, *rall.* at measure 106.