

AMERICAN SPECTACULAR

"Premiere performance by the Clearwater Community Band, Clearwater,
Florida. Jeffrey L. Traster, director"

Arr. By: Rob Romeyn
(ASCAP)

Bb Clarinet 2,3

Stately ♩ = 106

4

rall. 11 Spirited ♩ = 126 *p*

mf 21 *f*

28 *mp* *cresc.*

fp *f*

46 ♩ = 126 *mp*

f *ff* *f*

mp *f*

66 Expressive (♩ = 72)
rall.



a tempo



73



a tempo

rall.

a tempo

rall.

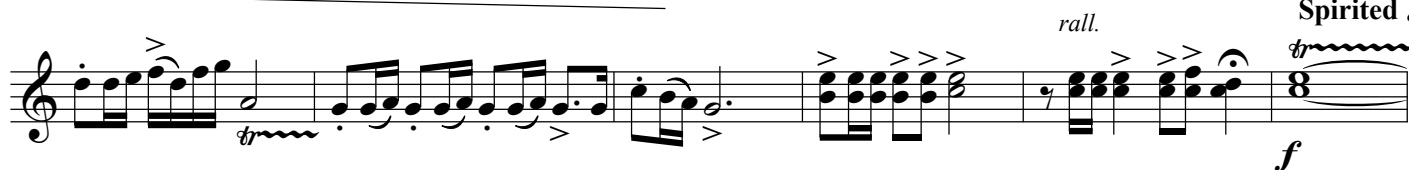
84

Proudly ♩ = 116



93

Spirited ♩ = 126



rall.

f



fp

f



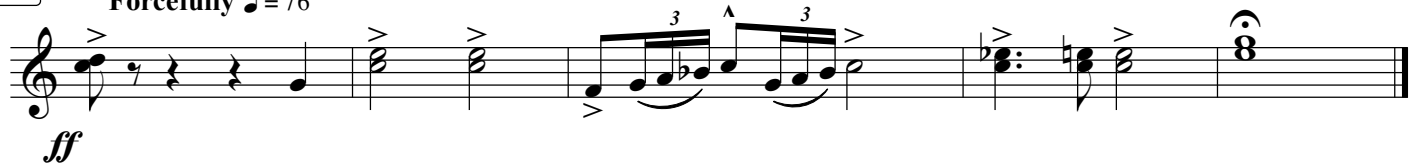
mf

cresc.

103

Forcefully ♩ = 76

rall.



ff