

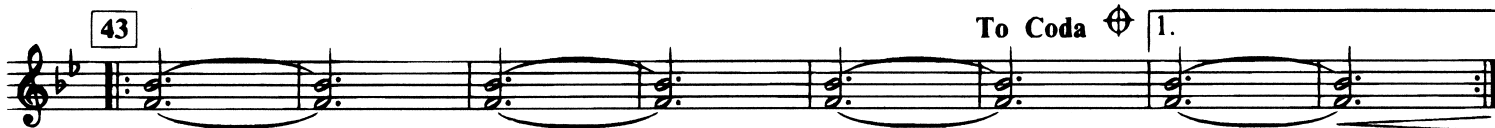
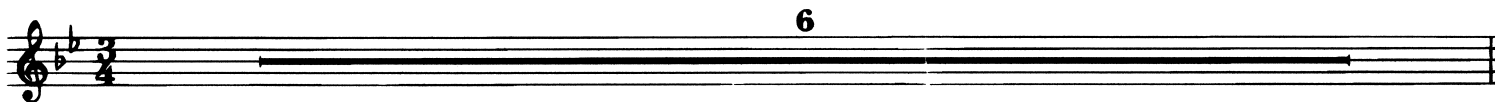
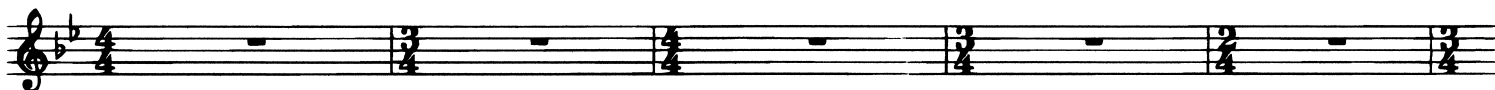
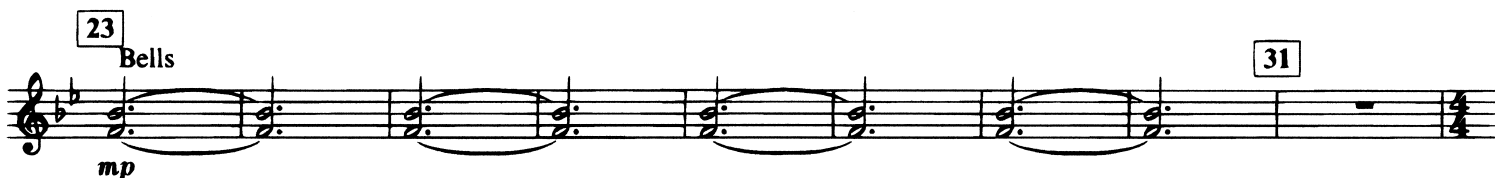
ENCANTO

GG-033

MALLET PERCUSSION

ROBERT W. SMITH (ASCAP)

Stately



mf - f



MALLET PERCUSSION

65 **Rubato** 8

molto rit. *f*

2

8

Detailed description: This staff contains measures 65 through 72. It begins with a whole rest, followed by a half note chord (F3, A2) marked *f*. A slur covers measures 66 and 67. A repeat sign follows, with a 2-measure rest. After another repeat sign, there is an 8-measure rest.

73 **Rubber mallets** 4

p

4

Detailed description: This staff contains measures 73 through 80. It starts with a 4-measure rest, then a half note chord (F3, A2) marked *p*. This is followed by a sequence of quarter notes: G3, F3, E3, D3, C3, B2, A2, G2. The staff ends with a 4-measure rest.

81 **Flowing** 4

mp

4

Detailed description: This staff contains measures 81 through 88. It begins with a 4-measure rest, followed by a half note chord (F3, A2) marked *mp*. The staff ends with a 4-measure rest.

89 **Hard mallets** 3

mf

3

Detailed description: This staff contains measures 89 through 96. It starts with a 3-measure rest, followed by a half note chord (F3, A2) marked *mf*. This is followed by a sequence of quarter notes: G3, F3, E3, D3, C3, B2, A2, G2. The staff ends with a 3-measure rest.

97 3

mf *rit.* *f*

3

Detailed description: This staff contains measures 97 through 104. It begins with a 3-measure rest, followed by a sequence of quarter notes: G3, F3, E3, D3, C3, B2, A2, G2. The staff ends with a half note chord (F3, A2) marked *f* and a double bar line.

105 **Tempo I** 4 **D.S. al Coda (with repeat)**

3 4

Detailed description: This staff contains measures 105 through 110. It starts with a 3-measure rest, followed by a half note chord (F3, A2). After a repeat sign, there is a 4-measure rest. The staff ends with a double bar line.

⊕ **Coda** 111 **Majestic**

molto rit.

4 4 4

Detailed description: This staff contains measures 111 through 114. It begins with a half note chord (F3, A2) marked *molto rit.*, followed by a 4-measure rest. The staff then changes to 4/4 time and contains three 4-measure rests.

115 **Presto** Trgl. 2

rit. *ff*

2

Detailed description: This staff contains measures 115 through 122. It starts with a 2-measure rest, followed by a sequence of quarter notes: G3, F3, E3, D3, C3, B2, A2, G2. The staff ends with a 2-measure rest.

Choke

ff *sub. mf* *ff*

Detailed description: This staff contains measures 123 through 130. It begins with a sequence of quarter notes: G3, F3, E3, D3, C3, B2, A2, G2, marked *ff*. This is followed by a sequence of quarter notes: G3, F3, E3, D3, C3, B2, A2, G2, marked *sub. mf*. The staff ends with a sequence of quarter notes: G3, F3, E3, D3, C3, B2, A2, G2, marked *ff*. An upward-pointing arrow labeled **Choke** is positioned above the final note.