

# TRIBUTE TO RUDY WIEDOEFT

## I. VALSE ERICA

String Bass

Arranged by  
GUNTHER SCHULLER

PRESTO (d. = 80)

Musical staff for String Bass, Presto section. The staff is in bass clef with a key signature of two flats (B-flat and E-flat) and a 2/4 time signature. The music begins with a dynamic marking of *f*. The tempo is marked PRESTO (d. = 80). The notation includes quarter notes, eighth notes, and sixteenth notes, with some notes beamed together. There are accents (^) over several notes. The section ends with a fermata and the word CADENZA.

**A** VALSE MODERATO (d. = 56)

Musical staff for String Bass, Valse Moderato section. The staff is in bass clef with a key signature of two flats and a 2/4 time signature. The music begins with a dynamic marking of *p*. The tempo is marked VALSE MODERATO (d. = 56). The notation includes quarter notes, eighth notes, and sixteenth notes. There are accents (^) over several notes. The section ends with a dynamic marking of *mp*.

Musical staff for String Bass, Valse Moderato section. The staff is in bass clef with a key signature of two flats and a 2/4 time signature. The music begins with a dynamic marking of *p*. The tempo is marked VALSE MODERATO (d. = 56). The notation includes quarter notes, eighth notes, and sixteenth notes. There are accents (^) over several notes. The section ends with a dynamic marking of *mf*.

Musical staff for String Bass, Valse Moderato section. The staff is in bass clef with a key signature of two flats and a 2/4 time signature. The music begins with a dynamic marking of *p*. The tempo is marked VALSE MODERATO (d. = 56). The notation includes quarter notes, eighth notes, and sixteenth notes. There are accents (^) over several notes. The section ends with a dynamic marking of *mf*.

Musical staff for String Bass, Valse Moderato section. The staff is in bass clef with a key signature of two flats and a 2/4 time signature. The music begins with a dynamic marking of *f*. The tempo is marked VALSE MODERATO (d. = 56). The notation includes quarter notes, eighth notes, and sixteenth notes. There are accents (^) over several notes. The section ends with a dynamic marking of *f* and the word TO CODA.

**B** MOLTO VIVACE (d. = 100)

Musical staff for String Bass, Molto Vivace section. The staff is in bass clef with a key signature of two flats and a 2/4 time signature. The music begins with a dynamic marking of *mf*. The tempo is marked MOLTO VIVACE (d. = 100). The notation includes quarter notes, eighth notes, and sixteenth notes. There are accents (^) over several notes. The section ends with a dynamic marking of *mf*.

Musical staff for String Bass, Molto Vivace section. The staff is in bass clef with a key signature of two flats and a 2/4 time signature. The music begins with a dynamic marking of *mf*. The tempo is marked MOLTO VIVACE (d. = 100). The notation includes quarter notes, eighth notes, and sixteenth notes. There are accents (^) over several notes. The section ends with a dynamic marking of *mf*.

Musical staff for String Bass, Poco Meno Mosso section. The staff is in bass clef with a key signature of two flats and a 2/4 time signature. The music begins with a dynamic marking of *mf*. The tempo is marked POCO MENO MOSSO. The notation includes quarter notes, eighth notes, and sixteenth notes. There are accents (^) over several notes. The section ends with a dynamic marking of *mf* and the word RIT.

String Bass

**C** MODERATO MA MOLTO RUBATO (♩ = 120)

mp

RIT. A TEMPO

RIT. ALLEGRO

D.S. AL CODA

CAD.

This section consists of three staves of music in a 4/4 time signature with a key signature of three flats. The first staff begins with a mezzo-piano (mp) dynamic. The second staff includes a ritardando (RIT.) marking followed by a return to the original tempo (A TEMPO). The third staff includes another ritardando (RIT.) marking followed by an allegro (ALLEGRO) tempo change. The section concludes with a double bar line and a 'D.S. AL CODA' instruction, with a 'CAD.' marking at the end of the final measure.

**D**

f

cresc.

ff

This section consists of one staff of music in a 4/4 time signature with a key signature of three flats. It begins with a forte (f) dynamic and includes a crescendo (cresc.) marking. The section ends with a fortissimo (ff) dynamic and a double bar line.

CODA

**E** PRESTO (♩ = 100)

ACCEL. p

ACCEL. E CRESC.

mf

SEMPRE ACCEL. E CRESC.

(♩ = 116)

\* ATTACCA

This section consists of three staves of music in a 4/4 time signature with a key signature of three flats. The first staff begins with an acceleration (ACCEL.) marking and a piano (p) dynamic. The second staff includes a mezzo-forte (mf) dynamic and the instruction 'SEMPRE ACCEL. E CRESC.' (always accelerating and crescendoing). The third staff includes a fortissimo (ff) dynamic, a tempo change to 116 beats per minute (♩ = 116), and an 'ATTACCA' marking. The section concludes with a double bar line.

\* ATTACCA (if all three sections are performed)

# II. SAXARELLA

String Bass

ALLEGRO (♩ = 100)

\* **[F]** **[G]** STACC.

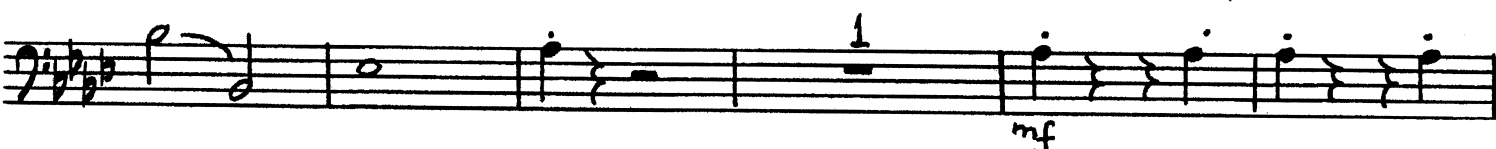
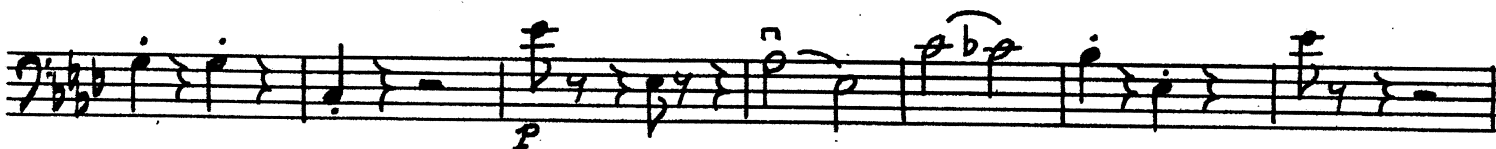
**[H]**

**[I]**

**[J]**

\* If played separately, start at letter **[F]**

String Bass



**K**



### III. SAXOPHOBIA

String Bass

ALLEGRO VIVACE (♩ = 138)

First staff of music in bass clef, key signature of three flats (B-flat, E-flat, A-flat), and 4/4 time signature. It begins with a forte (*f*) dynamic. The notes are: G2, A2, B-flat2, C3, D3, E-flat3, F3, G3, A3, B-flat3, C4, D4, E4, F4, G4, A4, B-flat4, C5.

**L**

Second staff of music, continuing the bass line. It starts with a mezzo-forte (*mp*) dynamic and includes a *SIM.* (simile) marking.

Third staff of music, featuring a slur over the first two measures. It includes a mezzo-forte (*mp*) dynamic and a *SIM.* marking, ending with the instruction "TO CODA" and a diamond-shaped coda symbol.

Fourth staff of music, starting with a sforzando (*sf*) dynamic.

**M**

Fifth staff of music, continuing the bass line with a mezzo-forte (*mp*) dynamic.

Sixth staff of music, continuing the bass line with a mezzo-forte (*mp*) dynamic.

Seventh staff of music, starting with a sforzando (*sf*) dynamic and ending with an accent (^) over the final note.

**N**

Eighth staff of music, continuing the bass line with a *SIM.* (simile) marking.

Ninth staff of music, continuing the bass line with a *SIM.* (simile) marking.

String Bass

0

Sim. mf

mf

D.S. AL CODA

mf

CODA



P

f marc. sf

Q

PIZZ.

mf

mf

R

mf Sim.

Simile

sf sfz